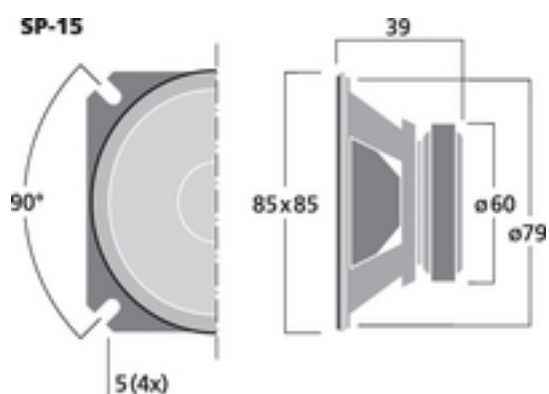
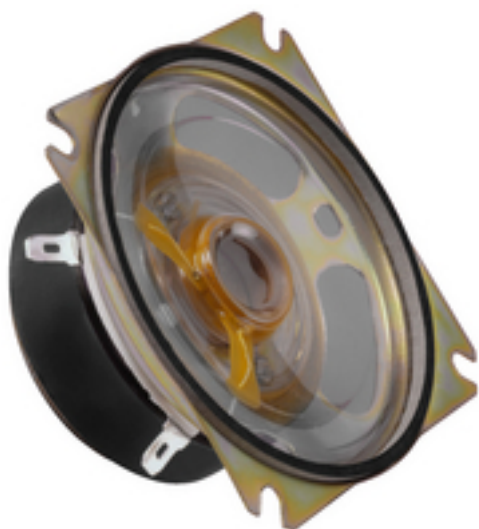


## SP-15 - Special Speaker



Special speaker, 10 W, 8 Ohm

- All-plastic cone with hard suspension
- Moisture-proof
- Special version for signal sounds of alarm systems
- Operating temperature range: -25 °C to +70 °C

## Tekniset tiedot:

Impedance (Z)	: 8 Ohm
Transmission method	: -
Frequency range	: f3-8,000 Hz
Resonant frequency (fs)	: 430 Hz
Rec. crossov. frequ. (fmax.) (12 dB/oct.)	: -
Power rating (RMS)	: 10 W
Peak music power output (MAX)	: 15 W
Sensitivity	: 96 dB/W/m
Max. rated SPL	: -
Max. voltage	: -
Radiation angle, horizontal	: -
Radiation angle, vertical	: -
Suspension compl. (Cms)	: -
Moving mass (Mms)	: -
Mech. Q factor (Qms)	: -
Electr. Q factor (Qes)	: -
Total Q factor (Qts)	: -
Equivalent volume (Vas)	: -
DC resistance (Re)	: -
Force factor (BxL)	: -
Voice coil induct. (Le)	: -
Voice coil diameter	: -
Voice coil former	: -
Linear excursion (X <sub>MAX</sub> )	: -
Eff. cone area (Sd)	: -
Magnet weight	: 150 g
Magnet diameter	: Å~ 60 mm
Mounting cutout	: Å~ 79 mm
Mounting depth	: 39 mm
Mounting hole diameter	: -
Hole spacing X-axis	: -
Hole spacing Y-axis	: -
Dimensions	: 85 x 85 x 39 mm
Outside diameter	: -
Width	: 85 mm



Height	: 85 mm
Depth	: 39 mm
Protective class	: -
Admiss. ambient temp.	: -25 °C to +70 °C
Weight	: 0.355 kg
Packing unit	: 1
Type of speaker	: -