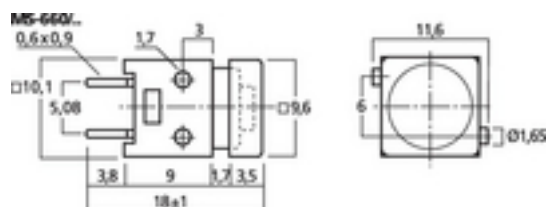
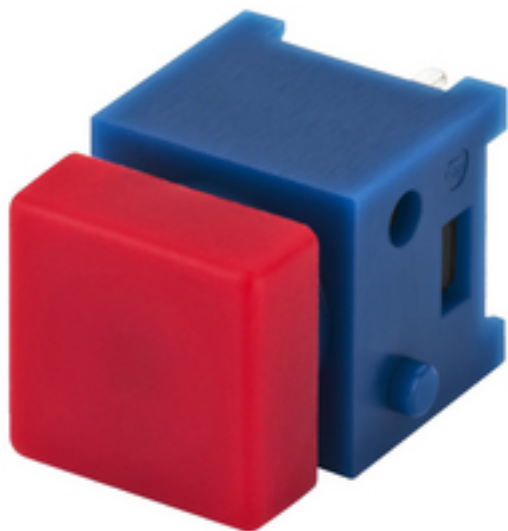


# MS-660/RT - Mini Push Switch



Mini momentary PCB push-buttons, end-to-end mounting

- Single-pole
- Pin spacing: 5 mm
- NO contact
- Dimensions: 10 x 10 mm
- For safety extra-low voltage or signal voltage
- Current rating: 1 A
- Red (RT) or black (SW)

## Tekniset tiedot:

Description	: momentary push-button
Type	: miniature PCB
Wafers	: -
Contacts	: -
Switching function	: -
Switch positions	: -
Power rating	: 1 A
PC spacing	: 5 mm
Colour/colour coding	: red, blue
Mounting hole	: -
Mounting depth	: -
Dimensions	: 10 x 10 mm
Weight	: 2 g