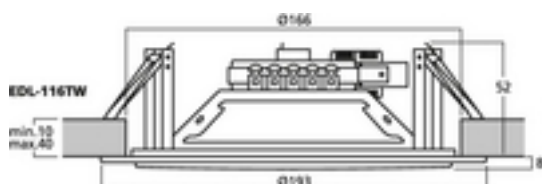
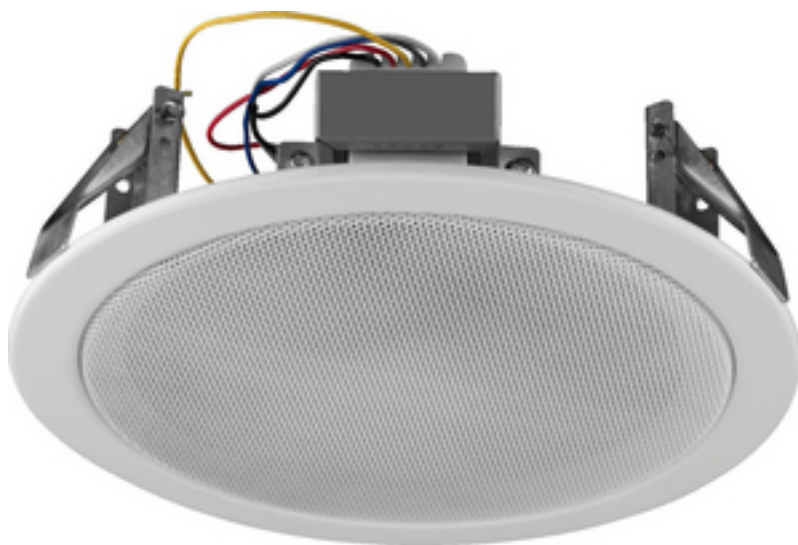


EDL-116TW - PA Loudspeaker

100V



PA ceiling speaker

- 100 V line technique
- 15 cm (6") 2-way coaxial speaker
- Metal housing with protective speaker grille
- Power taps: 10/6/3/1.5 W
- Quick-mounting facility with spring clips
- Connection via spring-loaded terminal
- For a ceiling thickness from 10 to 40 mm

Tekniset tiedot:

| | |
|---|-----------------------|
| Impedance (Z) | : - |
| Transmission method | : 100 V |
| Frequency range | : 90-20,000 Hz |
| Resonant frequency (fs) | : - |
| Rec. crossov. frequ. (fmax.) (12 dB/oct.) | : - |
| Power rating (RMS) | : 10/6/3/1.5 W |
| Peak music power output (MAX) | : - |
| Sensitivity | : 92 dB/W/m |
| Max. rated SPL | : 102 dB |
| Max. voltage | : - |
| Radiation angle, horizontal | : - |
| Radiation angle, vertical | : - |
| Suspension compl. (Cms) | : - |
| Moving mass (Mms) | : - |
| Mech. Q factor (Qms) | : - |
| Electr. Q factor (Qes) | : - |
| Total Q factor (Qts) | : - |
| Equivalent volume (Vas) | : - |
| DC resistance (Re) | : - |
| Force factor (BxL) | : - |
| Voice coil induct. (Le) | : - |
| Voice coil diameter | : - |
| Voice coil former | : - |
| Linear excursion (X _{MAX}) | : - |
| Eff. cone area (Sd) | : - |
| Magnet weight | : - |
| Magnet diameter | : - |
| Mounting cutout | : Å~ 166 mm |
| Mounting depth | : 55 mm |
| Mounting hole diameter | : - |
| Hole spacing X-axis | : - |
| Hole spacing Y-axis | : - |
| Dimensions | : Å~ 195Å mm x 55Å mm |
| Outside diameter | : Å~ 195 mm |
| Width | : Å~ 195 mm |

| | |
|-----------------------|-----------|
| Height | : - |
| Depth | : 55 mm |
| Protective class | : - |
| Admiss. ambient temp. | : 0-40 °C |
| Weight | : 0.82 kg |
| Packing unit | : 1 |
| Type of speaker | : 150 |