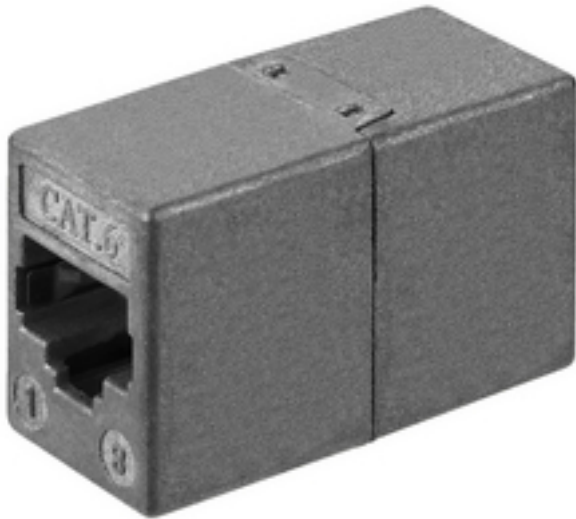


CAT-6C - CAT6 Adaptor



Cat. 6 dual inline jack

- For extending Cat. 6 network cables as required
- Fitted with RJ45 jacks on both ends
- Fully wired (all 8 poles)
- Diecast metal housing, with shielding

Image similar.

Tekniset tiedot:

| | |
|------------------------------|-------------------------------|
| Description | : dual inline jack |
| Type | : Cat. 6 |
| Quantity | : 1 |
| Features | : 8 poles, shielded |
| Colour/colour coding | : - |
| Power rating | : - |
| Insulating resistance | : - |
| Dielectric strength | : - |
| Certification | : - |
| Pole number | : - |
| Cable inlet | : - |
| Suitable cable cross section | : - |
| Connection | : 2 x RJ45 jack |
| Strain relief | : - |
| Cable bending protection | : - |
| Stereo | : - |
| Mono | : - |
| Switches | : - |
| Material | : diecast metal |
| Central fixing | : - |
| Contact type | : - |
| No. of contacts | : - |
| Contact width | : - |
| Contact distance | : - |
| Admiss. ambient temp. | : - |
| Dimensions | : - |
| Diameter | : - |
| Length | : - |
| Weight | : 37 g |
| Other features | : for extending Cat. 6 cables |