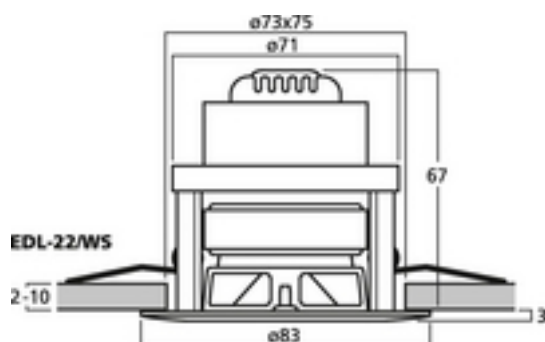
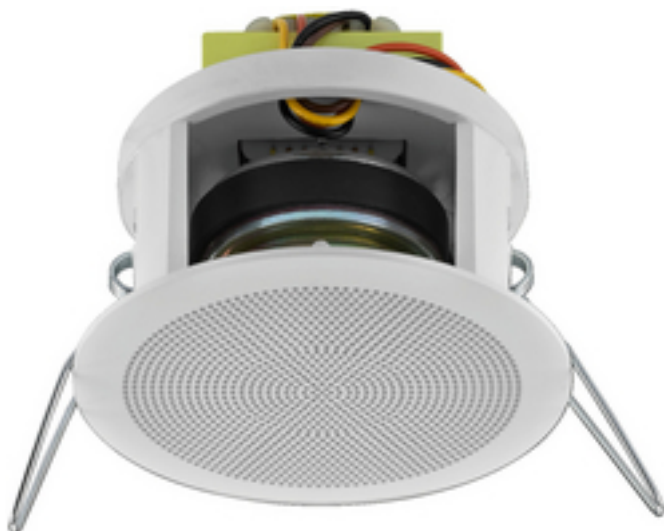


## EDL-22/WS - PA Loudspeaker

100V



PA ceiling speaker,  
small and compact design, with a very wide bandwidth reproduction.

- 100 V line technique
- Quick-mounting facility
- White plastic housing
- For a ceiling thickness from 2 to 10 mm

## Tekniset tiedot:

|   |  |
|---|--|
| Impedance (Z)                             | : -  |
| Transmission method                       | : 100 V  |
| Frequency range                           | : 130-20,000 Hz  |
| Resonant frequency (fs)                   | : -  |
| Rec. crossov. frequ. (fmax.) (12 dB/oct.) | : -  |
| Power rating (RMS)                        | : 6/3/1.5 W  |
| Peak music power output (MAX)             | : -  |
| Sensitivity                               | : 85 dB/W/m  |
| Max. rated SPL                            | : -  |
| Max. voltage                              | : -  |
| Radiation angle, horizontal               | : -  |
| Radiation angle, vertical                 | : -  |
| Suspension compl. (Cms)                   | : -  |
| Moving mass (Mms)                         | : -  |
| Mech. Q factor (Qms)                      | : -  |
| Electr. Q factor (Qes)                    | : -  |
| Total Q factor (Qts)                      | : -  |
| Equivalent volume (Vas)                   | : -  |
| DC resistance (Re)                        | : -  |
| Force factor (BxL)                        | : -  |
| Voice coil induct. (Le)                   | : -  |
| Voice coil diameter                       | : -  |
| Voice coil former                         | : -  |
| Linear excursion (X <sub>MAX</sub> )      | : -  |
| Eff. cone area (Sd)                       | : -  |
| Magnet weight                             | : -  |
| Magnet diameter                           | : -  |
| Mounting cutout                           | : $\tilde{\text{A}} \sim 73 \text{ mm}$                      |
| Mounting depth                            | : 67 mm  |
| Mounting hole diameter                    | : -  |
| Hole spacing X-axis                       | : -  |
| Hole spacing Y-axis                       | : -  |
| Dimensions                                | : $\tilde{\text{A}} \sim 83 \text{ mm} \times 70 \text{ mm}$ |
| Outside diameter                          | : $\tilde{\text{A}} \sim 83 \text{ mm}$                      |
| Width                                     | : $\tilde{\text{A}} \sim 83 \text{ mm}$                      |



|                       |         |
|-----------------------|---------|
| Height                | : -     |
| Depth                 | : 70 mm |
| Protective class      | : -     |
| Admiss. ambient temp. | : -     |
| Weight                | : 325 g |
| Packing unit          | : 1     |
| Type of speaker       | : 50    |